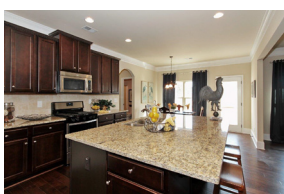
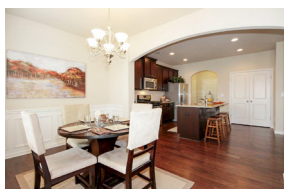


100% FINANCING* IS ONLY ONE **CLICK** AWAY...



AT KERLEYFAMILYHOMES.COM



CHEROKEE COUNTY

Canton

River Green • Low \$300's

COBB COUNTY

Acworth

Blue Springs
- Townhomes • Low \$100's
- Single Family • Mid \$100's
Tate Creek Estates • High \$200's
Burnt Hickory • Low \$300's

Austell

Concord Mill • High \$100's

Kennesaw

Baker Station Townhomes • Mid \$100's

Marietta

Willows at Chastain • Mid \$200's

Powder Springs

Dogwood Park • Mid \$100's
SilverBrooke • Mid \$100's

COWETA COUNTY

Newnan

Cottages at Stillwood Farms • Mid \$100's
Belmont Park • Low \$100's

DOUGLAS COUNTY

Douglasville

Chicago Park • Low \$100's
Perennial Walk • Low \$200's
Brookmont - The Cottages • Low \$100's
Brookmont - The Meadows • Mid \$100's
Brookmont Reserve • Low \$200's
Legends at Bear Creek • Low \$200's
Chaparral Ridge • Mid \$100's

FORSYTH COUNTY

Cumming

The Villages of Castleberry
- Townhomes • Mid \$100's
- Single Family • Low \$200's
Indian Springs High • High \$100's

S. FULTON COUNTY

Fairburn

Durham Lakes • High \$100's

GWINNETT COUNTY

Dacula

River Springs • High \$200's
Estates at Ewing Chapel • Low \$200's

Snellville

Springdale Falls • High \$100's

HENRY COUNTY

McDonough

Cottages at Avalon • Mid \$100's
ClearWater Pointe • High \$100's
Heron Bay • Mid \$300's - \$400's
North Valley • Low \$100's

PAULDING COUNTY

Dallas

Oak Glen • Mid \$100's
Senators Ridge • High \$100's

It's all about *value*



*With preferred lender Academy Mortgage. This is not an offer for extension or credit or a commitment to lend. All mortgage products are subject to credit approval, rates, program terms and conditions are subject to change without notice. Additional conditions, qualifications and restrictions may apply. See agent for details. Information believed accurate but not warranted and is subject to errors, omissions, changes or withdrawal without prior notice. 🏠

BERKSHIRE HATHAWAY HomeServices
NEW HOMES SERVICES
SALES • MARKETING

